

PARAMETERS

[Parameters](#)

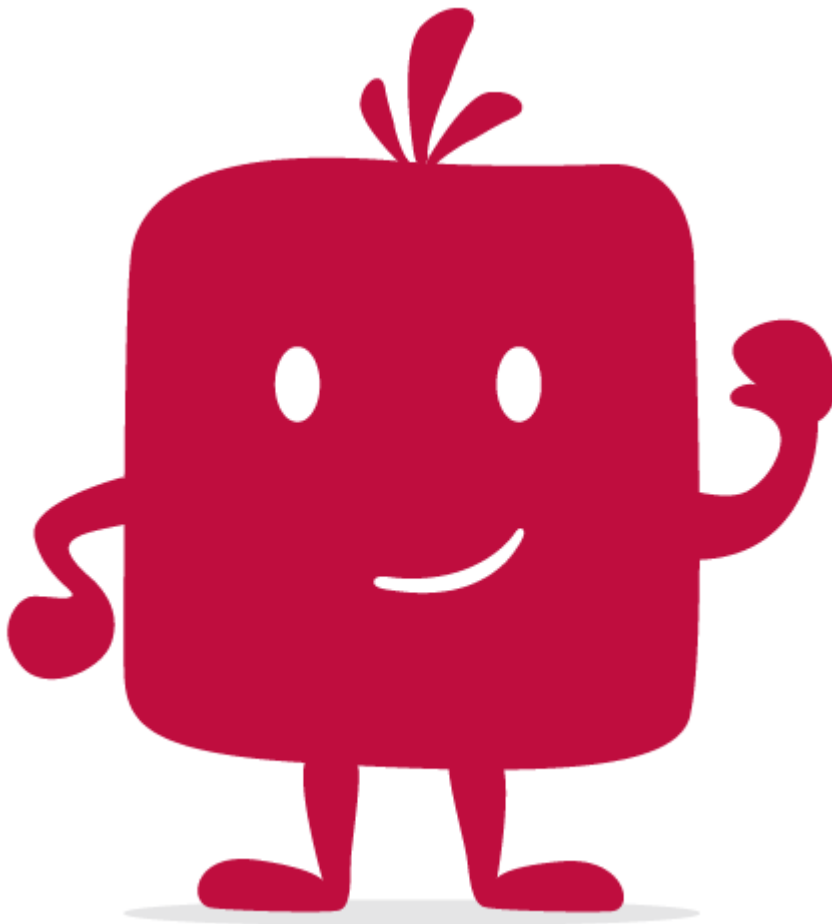
> Parameters

Parameters

The Settings Menu allows you to configure the behavior and visual appearance of the selected Application.

Caution: The modification of the data in the Settings menu is effective the next time the application is started (or reloaded from the App in shapper Viewer).

Among these parameters, there is a set of general type parameters, but also a set of Design type parameters, an "About" page.



Watch the video !